

UltraMatrix 4X



4 user KVM matrix switch

Connect 1,000 computers to four or more user stations

Supports PC, Sun, Apple, USB, workstations, and serial devices

Plug-in cards makes the system versatile and easy to expand and maintain

Features and Benefits

- Modular design makes units simple to install, expand, and maintain
- Security system with user ID, password, and profile prevents unauthorized configuration and access
- Uses UltraCable™ for superior cable management with lengths of up to 100 feet
- Video resolution up to 1280 x 1024
- Advanced Visual Interface (AVI) on-screen display informs you of connection status with user friendly messages
- Multi-lingual AVI - English, French, German, Spanish, Italian, Portuguese
- Status screen shows inter-box communication, connections, computer power, and other information
- Pre-configuration feature allows installation without powering down servers
- Connect more than 4 users by adding local KVM stations at each switch
- Flash memory with free lifetime upgrade of firmware keeps compatibility with latest devices

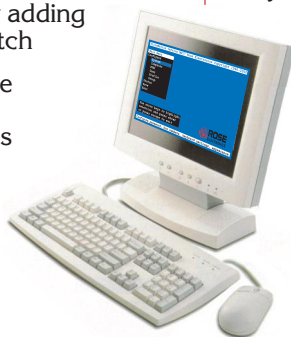
The UltraMatrix 4X™ Advantage...

UltraMatrix 4X offers the latest in KVM switch technology with the ability to connect up to four non-blocking connections between keyboards, monitors, and mice to as many as 1,000 computers.

UltraMatrix 4X reduces clutter, saves physical space, and reduces equipment and power costs. Use the Advanced Visual Interface to configure the unit, name computers, select computers, and to show computer connections.

Units connect together with a bus connection to make a seamless and truly scalable KVM matrix switch. The advanced distributed design of the UltraMatrix uses networking communication technology to reduce cost, eliminate single points of failure, and increase reliability.

Local monitor connection, security, flash memory, system status, and a long list of other features ensures the UltraMatrix will streamline your data center or server room. Call us for more information on this and other excellent Rose products.

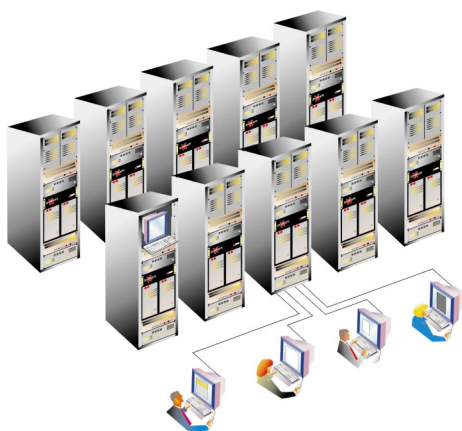


UltraMatrix Advanced Visual Interface



WWW.ROSEL.COM

Typical Application



UltraMatrix Models UltraMatrix 4X is based on a five-card chassis which accepts up to four computer/user cards and one expansion card. Ultra Matrix comes ready-to-go with the cards installed according to your order. The maximum you can populate in one chassis is sixteen computers and four users. You connect the units together to get more computers and users. The chassis is versatile for changing as you grow. It makes maintenance and service easy and supports future hardware.

Cables Rose's UltraCable streamlines the cable connections to UltraMatrix, simplifying cable management and improving system reliability. Order the computer or user cable by the computer's keyboard, monitor, and mouse connector style and desired length. We stock a large variety of cable types in lengths up to 100 feet. You should specify standard resolution (800x600 or less) or high resolution (greater than 800x600). Expansion cables are ordered by length and are usually connected in a bus. You need one cable for every two global user stations.

Installation UltraMatrix is easy to install. You simply connect your computers and keyboards, monitors, and mice to the UltraMatrix ports using the UltraCable. Configure each switch's address and connect the switches together with the expansion cables. Access the on-screen display from the Advanced Visual Interface (AVI), configure settings such as computer names and security, and save it in flash memory. You'll be impressed by the simplicity and appearance of the AVI. Since the switches are networked together, configuring one switch configures them all.

Operation You can tailor UltraMatrix to suit your style of operation by configuring the level of security that you desire. You can either auto-assign security settings to KVM stations or require users to log into the switch with a user ID and password. The user profile then grants access rights to designated computers and controls other characteristics. Use simple keyboard commands to access computers and system status. The Advanced Visual Interface gives helpful messages to indicate the status of all connections. To allow maximum versatility, users can connect in four different modes: view, share, control, and private. Each card also has a serial port if you wish to control the connection of any user station to any computer by the serial data link of another computer.

Keyboard and Mouse UltraMatrix fully emulates the keyboard and mouse, so computers can be booted at any time. It supports all operating systems such as Windows 95/98/NT/2000, Linux, Sun Solaris/Open Windows, Apple, and Unix workstations. Keyboard and mouse can be PC or Sun. Five types of computer mice are directly supported including wheel mice. USB and Apple are supported with inexpensive external converters.

Flash Memory To support the latest devices, UltraMatrix contains flash memory. We provide free lifetime firmware upgrades, available from our FTP site. Load new firmware into the UltraMatrix to add new features or support new equipment.

Advanced Visual Interface UltraMatrix excels with its Advanced Visual Interface (AVI) on-screen display technology. The interface is intuitive since it uses pop-up boxes to make selections. Help lines are shown for each item to make the interface even more user-friendly. The interface can be programmed for English, French, German, Spanish, Italian, or Portuguese. You can easily configure the computer names, security, appearance, screen saver and many other features with ease and style. Use the AVI to connect to computers by name, see connection status, and observe system status in real time.

Computer	Power	Slot	User	KVM	CPU Usage	Status
5-8	On	2	David	3	100%	Share mode
9-12	On	2	David	3	100%	Share mode
13-16	On	4	David	14	100%	Not logged in
17-20	On	2	David	3	100%	Share mode
21-24	On	2	David	3	100%	Share mode
25-28	On	2	David	3	100%	Share mode
29-32	On	4	David	14	100%	Not logged in
33-36	On	2	David	3	100%	Share mode
37-40	On	2	David	3	100%	Share mode
41-44	On	2	David	3	100%	Share mode
45-48	On	4	David	14	100%	Not logged in
49-52	On	2	David	3	100%	Share mode
53-56	On	2	David	3	100%	Share mode
57-60	On	2	David	3	100%	Share mode
61-64	On	4	David	14	100%	Not logged in

Real-time view from AVI of computer power, card location, firmware version, KVM type, CPU connections, users logged in, and connection status

Options To locate your computer, keyboard, monitor, or mouse further than 20 feet, use our coax high-resolution cables, ViewLink™ extenders, or CrystalView™ extenders to go as far as 1000 feet. Rack mount kits are available for 19", 23", or 24" racks.

Part numbers

UM4-aXbU/E

where "a" is the number of users (0-4)
where "b" is the number of computers (4-16)
where /E is when expansion card is installed
5-card chassis with 4 user video backplane
and universal switching power supply
Plug-in card for 4 computers and 1 user
Plug-in card for 4 computers and no users
Plug-in card for expansion, supports 4 users
Rack mount kit, nn= 19", 23", or 24"

* Can be ordered separately, standard unit has cards populated

Specifications

Dimensions	16.7" W x 7.0" D x 5.25" H (3 RU) 42.4 x 17.8 x 13.3 cm.
Weight	Fully populated - 14 lb. (6.4 kg.)
Power	Auto Switching, 90 - 240 VAC, 45 watts
Connectors	Power: IEC 320 standard receptacle CPU/KVM connector: DB25 female Expansion: HD15 male/female RS232: RJ45 6 conductor
Video bandwidth	100 Mhz
Video sync	Accepts HV, composite, and sync-on-green
Chassis	Electro galvanized steel, black powder coated
Controls	Lighted Power On / Off Switch
Indicators	None
Environmental	0 - 45° C, 5%-80% non-cond. relative humidity
Approvals	UL, cUL, TUV, CE



Rear View of UltraMatrix 4X, model UM4-4X16U/E

ROSE ELECTRONICS - US HEADQUARTERS
10707 Stancliff Road ■ Houston, Texas 77099 ■ USA
Tel 281-933-7673 ■ Tel 800-333-9343 ■ Fax 281-933-0044

ROSE ELECTRONICS - EUROPEAN OFFICE
Bourne Works High Street ■ Collingbourne Ducis
Marlborough Wiltshire SN8 3EH ■ UNITED KINGDOM
Tel +44 (0) 126 485 0574 ■ Fax +44 (0) 126 485 0529

ROSE ELECTRONICS - ASIA PACIFIC OFFICE
PO Box 3184 ■ Robina T.C. ■ Queensland 4230 ■ AUSTRALIA
Tel +617 5525 2714 ■ Fax +617 5525 2875

ROSE
ELECTRONICS
WWW.ROSEL.COM